



**Science
Department**

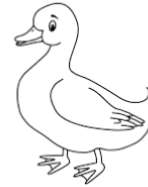
My name is:

Grade: 3 ()

Science 2nd Assessment notification

Date: / / 2025

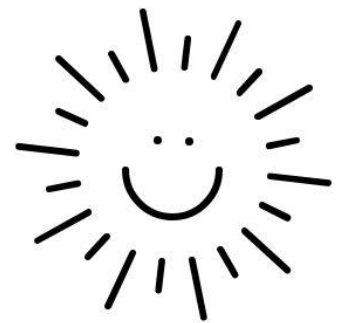
Dear parents and students,
for science will be on _____. It will



The 2nd assessment
include :

page 14

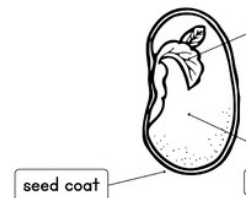
1. How does a seed grow into a plant?
2. How do animals move? Page 32
3. What coverings do animals have? Page 34
4. What is an insect? Page 36
5. What do animals need? Page 40
6. Living and non-living things page 48
7. What is habitat? Page 50



A seed can grow into a new plant. The plant needs sunlight, water, air, and soil to grow up.

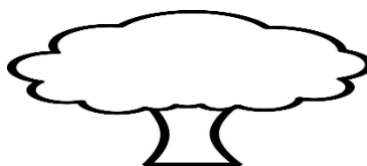
Parts of plants: roots -stem-leaves -flowers-fruits.

1. Seed
2. Seed coat: outer shell of a seed.



Roots hold the plant in the ground and absorb water. The stem takes the water to the parts of the plants.

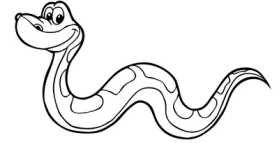
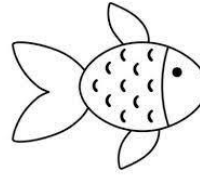
Leaves use sunlight, air and water to make food for the plant and they come in many shapes and sizes.



How do animals move?

Animals move in many ways.

- A dog uses legs to walk or run.
- A snake slithers on the ground.
- A fish uses fins to swim.
- A duck uses webbed feet to swim.



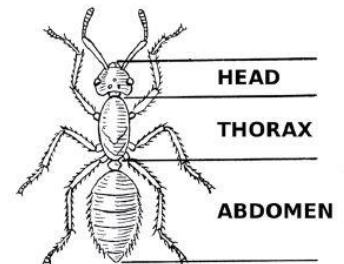
shutterstock.com - 1952362678

What coverings do animals have?

- A cat is covered with fur. Fur keeps the cat warm.
- A bird's feathers keep heat in and water out.
- The scales on the fish are slippery. They help the fish swim.
- A turtle's hard outer covering is called a shell. The shell protects it.
- Frogs have smooth skin that helps them stay moist

What is an insect?

- An insect is an animal.
- All insects have three main body parts:
 - 1. Head 2. Thorax 3. Abdomen
- Insects have 6 legs.
- Ants, bees, grasshoppers, butterflies, ladybirds and beetles are types of insects.



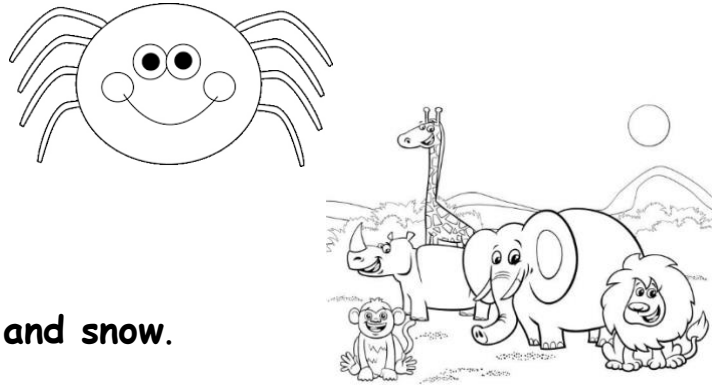
What do animals need?

All animals need food, water, shelter and air to live and grow.

- A spider catches insects in a web .
- The spider gets food and water by eating insects.









Where do some animals live?

- A **deer** lives in the **forest**.
- A fish lives in water.
- A camel lives in the desert.
- A **penguin** lives in the **cold** near **ice and snow**.



Living and non-living things.

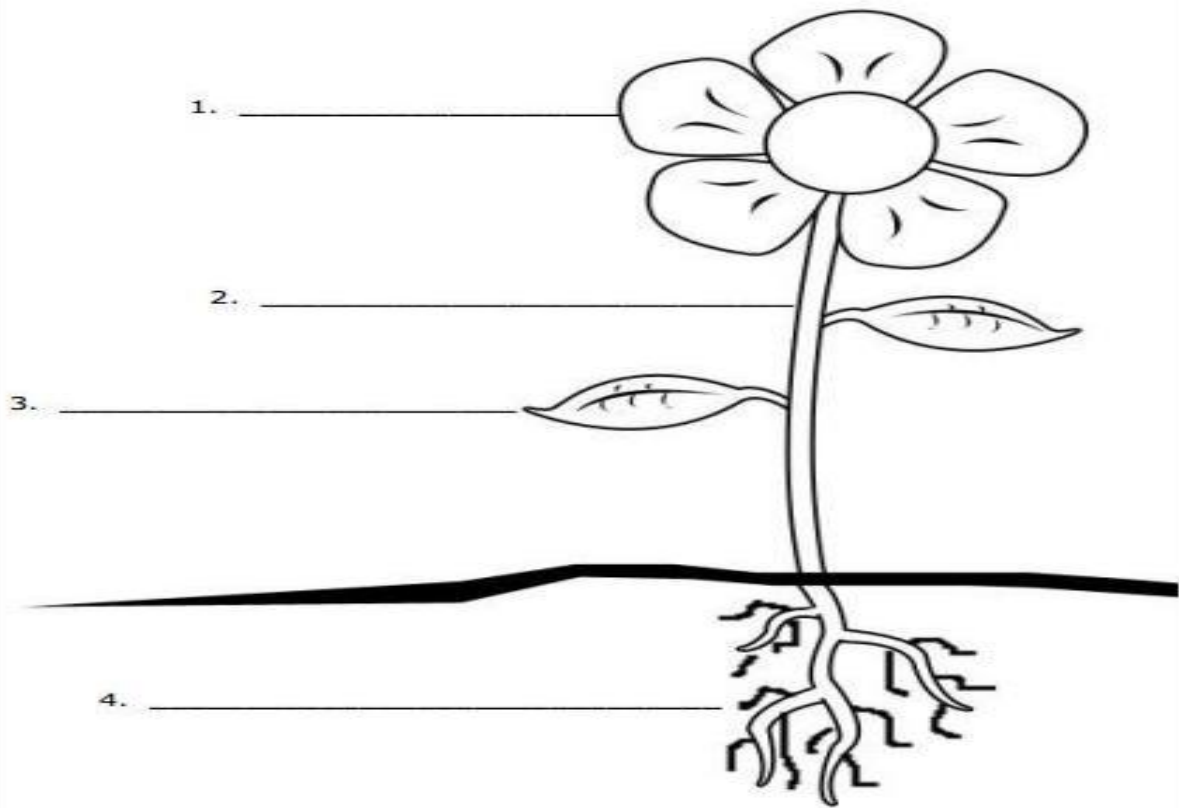
- Living thing refers to things that are now or once were alive. A non-living thing is anything that was never alive.
- Plants and animals are living things.
- Living things can grow and change.
- Some living things move on their own. Ex, frogs can jump.
- Non-living things cannot move on their own.
- Non-living things cannot grow.

Living Things		Non Living Things	
			
Tree	Fish	House	Balloon
			
Bee	Flower	Umbrella	Kite

Animal habitats

- A habitat is a place where animals and plants live.
- A habitat has everything a plant or animal needs.
- The garden is a habitat for many living things. There is food, water, and air for the animals. There is sunlight, water, and air for the plants.

Parts of a Plant



ANIMAL HABITATS

LIST AS MANY ANIMALS AS YOU CAN FOR EACH HABITAT; THINK OF PONDS, CAVES



FARM



DOMESTIC



FOREST



JUNGLE



DESERT



SEA / OCEAN



MOUNTAIN



SAVANNAH



ARCTIC - POLE